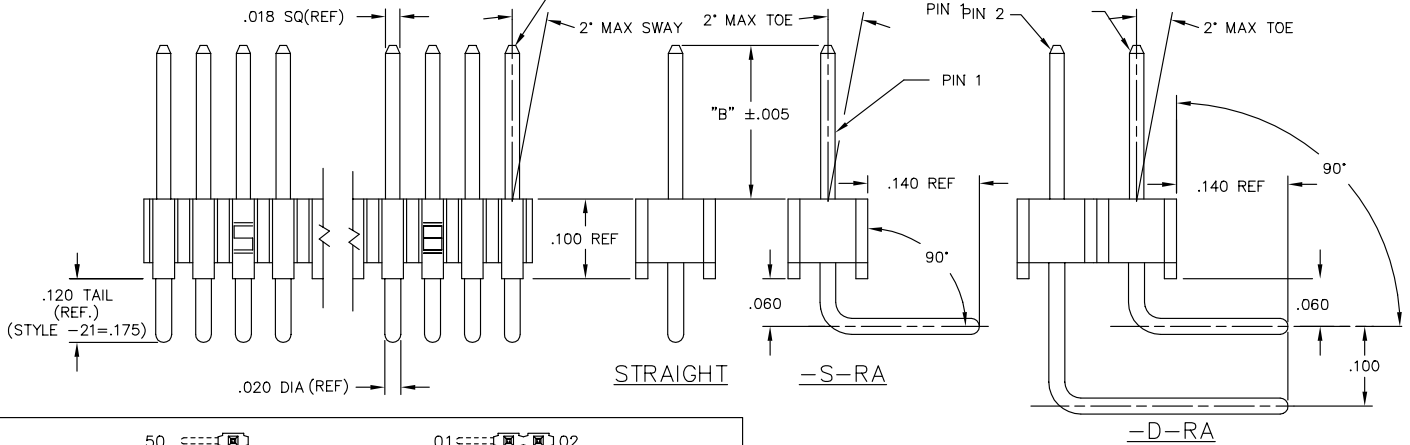
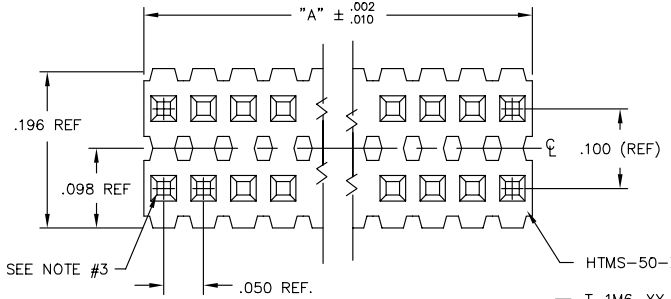


- NOTES:
1. MAX ALLOWABLE BOW: .005 INCH/INCH.
 2. TERMINAL PUSHOUT FORCE: 2 LBS. MIN.
 3. MAX PIN ROTATION IN BODY: 2°.
 4. CUT FLASH .010 MAX
 5. TUBE POSITIONS 8-50 ONLY. POSITIONS 2-7 TO BE BULK PACKAGED.



DIMENSIONS ARE IN INCHES		UNLESS OTHERWISE NOTED		TOLERANCES ARE:		TITLE:	DWG NO:
ONE PLACE DECIMALS ± .1	THREE PLACE DECIMALS ± .005	FOUR PLACE DECIMALS ± .0020	ANGLES ± 2°		TERMINAL MICRO STRIP		TMS-1XX-XX-XX-X-XX-XXX
TWO PLACE DECIMALS ± .01						SHEET 1 OF 1	

TMS-1XX-XX-XX-X-XX-XXX

OPTION
-POLARIZING SPECIFICATION
XXX INDICATES POS. TO BE OMITTED
(SEE FIG. 1)

OPTION
-RA: RIGHT ANGLE (SEE TABLE 1)
(SINGLE & DOUBLE RA AVAILABLE
IN STYLE -01, -02, & -03 ONLY)

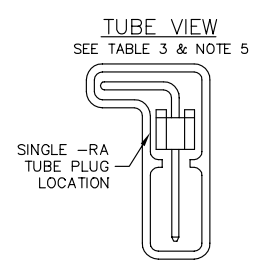
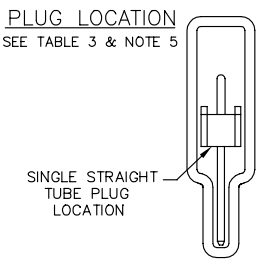
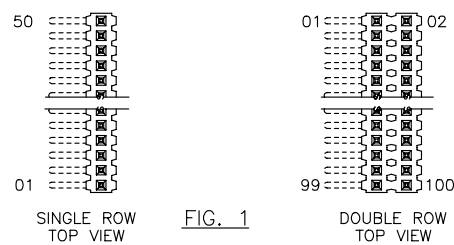
BODY SPECIFICATION
-S: SINGLE (USE HTMS-50-S)
-D: DOUBLE (USE HTMS-50-D)

PLATING SPECIFICATION
-G: GOLD, SPECIFY -G IN TERMINAL SUFFIX -XX
-T: TIN, SPECIFY -T IN TERMINAL SUFFIX -XX
ONLY AVAILABLE ON LEAD STYLES -01, -02, -51 AND -52.
-S: SELECTIVE, SPECIFY -S IN TERMINAL SUFFIX -XX
-F: FLASH GOLD, SPECIFY -F IN TERMINAL SUFFIX -XX
-H: HEAVY GOLD, SPECIFY -H IN TERMINAL SUFFIX -XX
-FM: SELECTIVE FLASH GOLD, MATTE TIN REMAINDER SPECIFY -FM IN TERMINAL SUFFIX -XX
-SM: SELECTIVE GOLD, MATTE TIN REMAINDER SPECIFY -SM IN TERMINAL SUFFIX -XX
-TM: MATTE TIN -TM IN TERMINAL SUFFIX -XX
ONLY AVAILABLE ON LEAD STYLES -01, -02, -51 AND -52.

TABLE 2

LENGTH	"L"	CONTACT AREA
-01	.440	.140
-02	.410	.140
-03	.610	.190
-04	.505	.190
-05	.705	.190
-12	.425	.165
-13	.625	.190
-14	.555	.190
-15	.755	.190
-16	.825	.190
-17	.320	.060
-18	.450	.190
-19	.650	.190
-21	.505	.190
-25	.330	.060
-26	.373	.075
-27	.398	.100
-28	1.050	.190

* REF FOR PIN LENGTH



PACKAGING TUBE TABLE

BODY STYLE	LEAD STYLE	TUBE	PLUG	
TMS-DOUBLE STRAIGHT STYLES	-01,-21, -51,-52	PT-1-24-01-22	TP-03	
	-02	PT-1-24-01-60	TP-03	
	-53	PT-1-24-02-66	TP-03	
	-55,-56	PT-1-24-01-29	TP-24	
	-54	PT-1-24-02-46	TP-03	
	-57	PT-1-24-02-25	TP-03	
	-58,-59	PT-1-24-16-29	TP-07	
	-60	PT-1-24-18-29	TP-07	
	-01	PT-1-24-01-24	TP-24	
	-21	PT-1-24-02-29	TP-24	
TMS-SINGLE STRAIGHT STYLES	-58,-59,-60	PT-1-24-10-03	TP-33	
	-02	PT-1-24-01-12	TP-12	
	-51,-52	PT-1-24-01-66	TP-24	
	-53,-54, -55,-56	PT-1-24-02-03	TP-24	
	-57	PT-1-24-01-46	TP-24	
TMS-DOUBLE RIGHT ANGLE	-01,-02,-03	PT-1-24-02-66	TP-03	
	TMS-SINGLE RIGHT ANGLE	-01,-02,-03	PT-1-24-01-66	TP-24

TABLE 1

STRAIGHT OPTION		RIGHT ANGLE OPTION			ALL
LEAD STYLE	TERMINAL SPEC.	LEAD STYLE	PIN #1	PIN #2	"B"
-01	T-1M6-18-XX-2	-01	T-1M6-14-XX-2	T-1M6-15-XX-2	.230
-02	T-1M6-17-XX-2	-02	T-1M6-12-XX-2	T-1M6-13-XX-2	.100
-03	N/A	-03	T-1M6-18-XX-2	T-1M6-19-XX-2	.125
-21	T-1M6-21-XX-2	-21	N/A	N/A	.190
-51	T-1M6-02-XX-2	-51	N/A	N/A	.190
-52	T-1M6-12-XX-2	-52	N/A	N/A	.205
-53	T-1M6-04-XX-2	-53	N/A	N/A	.285
-54	T-1M6-14-XX-2	-54	N/A	N/A	.335
-55	T-1M6-03-XX-2	-55	N/A	N/A	.390
-56	T-1M6-13-XX-2	-56	N/A	N/A	.405
-57	T-1M6-19-XX-2	-57	N/A	N/A	.430
-58	T-1M6-05-XX-2	-58	N/A	N/A	.485
-59	T-1M6-15-XX-2	-59	N/A	N/A	.535
-60	T-1M6-16-XX-2	-60	N/A	N/A	.605

MATERIAL:
BODY:
LIQUID CRYSTAL POLYMER
COLOR: BLACK

TERMINAL:
PHOSPHOR BRONZE

MSCUMKTC TMS-MKT

520 PARK EAST BLVD. NEW ALBANY, INDIANA 47151-1147
PHONE (812) 944-6733 P.O. BOX 1147
CODE 55322

MADE BY: PURVIS 8-13-87
CHECKED BY: WILLIAMS 10-21-87

ENG. APPROVAL

TMS-1XX-XX-XX-X-XX-XXX

SHEET 1 OF 1

PROPRIETARY NOTE
THIS DOCUMENT CONTAINS INFORMATION CONFIDENTIAL AND PROPRIETARY TO SAMTEC INC. AND SHALL NOT BE REPRODUCED OR TRANSMITTED IN ANY FORM OR BY ANY MEANS, ELECTRONIC OR MECHANICAL, INCLUDING PHOTOCOPYING, RECORDING, OR BY ANY INFORMATION STORAGE AND RETRIEVAL SYSTEM, WITHOUT THE WRITTEN CONSENT OF SAMTEC INC.